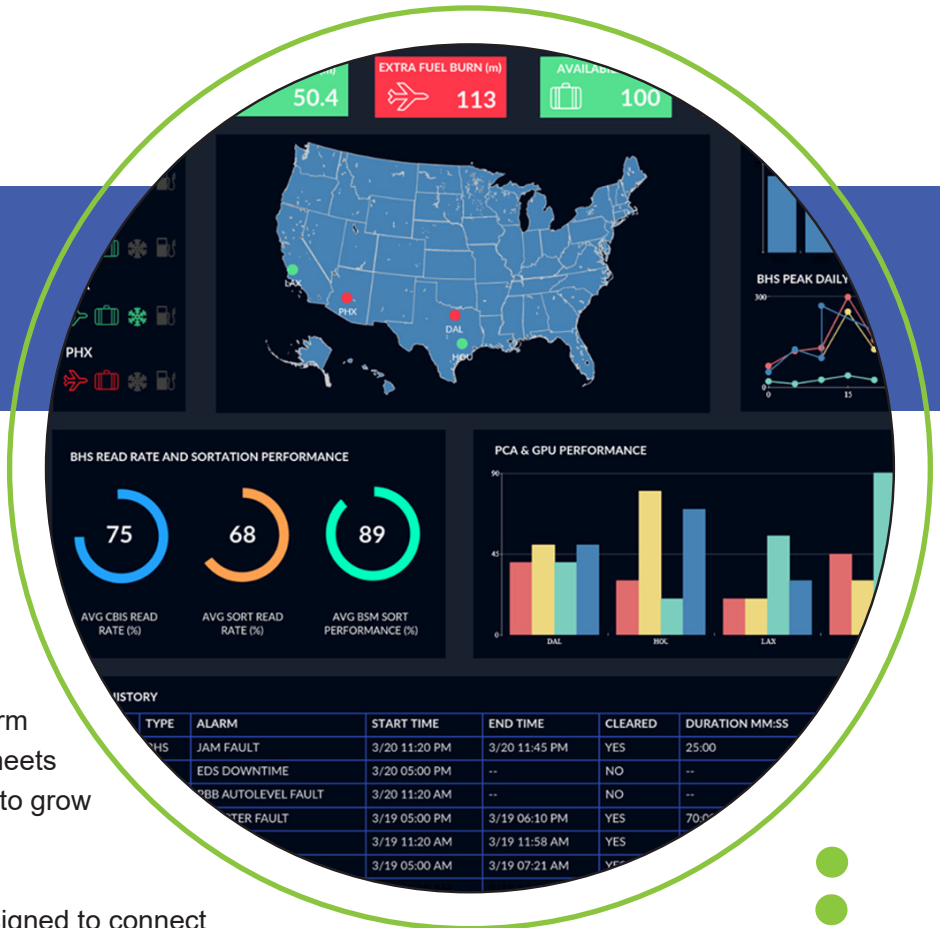


● Southwest Airlines®
● IoT CENTRAL
● MONITORING SYSTEM



Southwest Airlines Corporate Facilities department needed the ability to **remotely monitor critical operational equipment at the airports**. Sabel Systems brought their subject matter expertise in aviation operations together with PTC’s Internet of Things (IoT) platform – Thingworx – to deliver a solution that meets the needs of today and has the flexibility to grow as additional use cases are identified.

The Central Monitoring application is designed to connect to airport Passenger Boarding Bridges (PBBs), Baggage Handling Systems (BHS), Deicing Equipment, Fuel Farms as well as Southwest’s flight information system to monitor real-time operational metrics at various airports across the Southwest Airlines (SWA) network. SWA Corporate Facilities is also promoting this capability internally and identifying new use cases and user groups that can take advantage of the platform.

The application provides business value by **monitoring for compliance of cost-saving procedures, using machine learning to identify poorly performing equipment, and proactively notifying users** when a failure occurs to reduce downtime. The application also connects to SWA’s Computerized Maintenance Management System (CMMS) to automatically generate work orders reducing time to repair metrics. Getting data from previously unconnected equipment **opens new possibilities for operational improvement**.

Sabel served as the system integrator coordinating with various equipment manufacturers and airport/airline system owners, establishing connectivity, creating a data model, and developing the application using Thingworx and Kepware as well as providing on-site installation and configuration of cellular networking equipment.

In an industry where **every minute counts and customer satisfaction is a top priority**, Southwest Airlines continues to improve their already sterling reputation by staying ahead of their competition.

Sabel’s operational and technical subject matter experts, small-business cost efficiencies, and quick time to market delivery capabilities provide a **low risk, cost efficient and quick-turn solution** to accelerate IoT transformations.

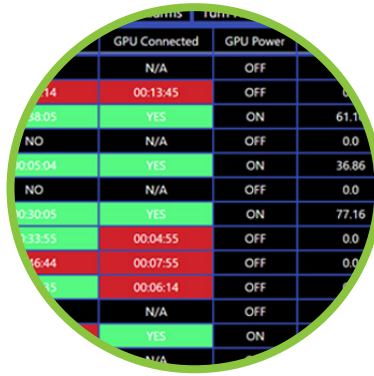
Email info@sabelsystems.com today for a demonstration of our capabilities.

FEATURES & BENEFITS



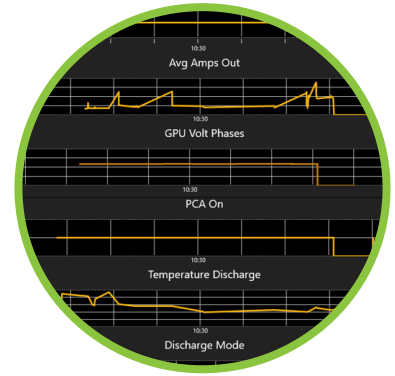
PROACTIVE NOTIFICATIONS

No need to wait for a phone call to alert you to an issue.



REAL-TIME INFORMATION

give more insight to operational health at any level of your organization.



MACRO TO MICRO LEVEL MONITORING

Stay at 30,000 feet or drill down to a specific component.



CONNECT DISPARATE SYSTEMS

Bring data from various equipment into one place to find new operational insights.



MOBILE ACCESS

View and interact with the application from any device with internet access.



CLOUD HOSTING

Enjoy the flexibility of hosting the solution in the cloud enabling faster connectivity.

CONNECTING WITH SABEL

Contact info@sabelsystems.com | 800.303.2588 | sabelsystems.com - LinkedIn - YouTube

SABEL FACTS

Sabel Systems Technology Solutions LLC was founded in 2001. (CAGE:5Z2A6 DUNS:131784725) Top Secret facility clearance.

CONTRACT VEHICLES:

- GSA PSS
- GSA STARS III
- C5 OTA
- Phase III SBIR

CERTIFICATIONS:

- CMMI Level 2 Services
- ISO 9001:2015
- NYC MWBE

OFFICES:

- Washington D.C.
- Dayton, OH
- New York, NY
- Oklahoma City, OK
- Warner-Robins, GA

NAICS:

- 541330, 541430, 541490, 541511,
- 541512, 541513, 541519, 541611,
- 541612, 541614, 541618, 541690,
- 541720, 541810, 541990, 561110,
- 561990, 611430, 611710, 624190